



Constellation.

 **Gold Star**

High-Performance
Standardized Fleet

Gold Star

A column-stabilized semi-submersible mobile offshore drilling unit (MODU) with dynamic positioning. It is designed to drill wells down to approximately 9.144m (30.000ft) from the mud line and operate in up to 2.743m (9.000ft) water depths for year-round operations in regions such as Offshore Brazil, Gulf of Mexico, West Africa and Southeast Asia.

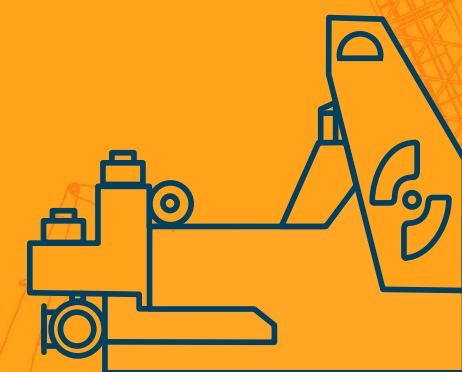


HIGHLIGHTS

**DPS 2+
DP Class**

**2.743m /
9.000ft**
Maximum
Water Depth

**NOV 56m
(185ft) Derrick**
2.000.000lbs (907t)
Gross Nominal Capacity



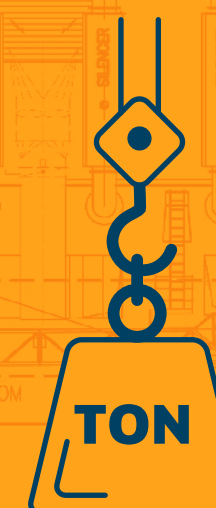
**4x NOV
14-P-220 Triplex
Mud Pumps**
7.500psi capacity



**1x NOV
18^{3/4} BOP**
15.000psi
working pressure

**Top Drive
NOV TDS-1000A**
907t capacity

5.500t
Maximum
Variable
Deck Load



MPD
Non-equipped

2x Cranes
2 Main Deck – 60t



TYPE | SS Dynamic Positioning
FLAG | Marshall Islands
YEAR BUILT/UPGRADED | 2009
DESIGN | DTG & MSC DSS-38
DP CLASS | DPS-2+



GENERAL DESCRIPTION

Operation Draft	18.5 to 20.5 m
Survival Draft	16.5 m
Transit Draft – Field Move	16.5 m
Transit Draft – Open Sea	8.7 m
Variable Deck Load Drilling	5,500 ton
Variable Deck Load Transit (Towing/Field)	5,122 ton
Variable Deck Load Survival	5,122 ton
Transit Speed	9.3 knots
Maximum Water Depth	2,743 m
Minimum Water Depth	500 m
Maximum Drilling Depth	7,620 m
Accommodation	150 persons

DRILLING EQUIPMENT

Derrick	NOV 185'
Hookload Capacity	2.000.000 lbs (907 t)
Drawworks	NOV SSSGD-1000-6000-48-82-9
Drilling Line	2 in
Compensator Type	NOV CMC-100-25
Rotary Table	NOV RST605
Rotary Table Opening	60 1/2 in
Rotary Table Static Load Capacity	907 ton
Top Drive	NOV TDS-1000A
Top Drive Capacity	907 ton
Top Drive Max. Cont. / Interm. Torque	62,300 (100,000) ft.lb
Top Drive Working Pressure	7,500 psi
Tubular Handling	NOV PRS-8i Vertical Pipe Racker; NOV Drill Floor Manipulator Arm; NOV AR4500 Automated Roughneck
Mud Pumps Quantity	4
Mud Pump Type	NOV 14-P-220
Mud Pump Working Pressure	7,500 psi
Mud Pump Power	2,200 hp
Shale Shakers	5 (Five) BRANDT LCM3D/CM2
Mud Cleaner & Vacuum Degasser	1 (one) Shale Shaker equipped with scalping deck, Desilter 22x4" and Desander 3x12" and Vacuum Degasser

POWER & MACHINERY

Main Power	10
Generators Model	NOV Baylor T8557XT-648
Generators Power	3,56 MW
Engines Model	GM-EMD, L20-710G9B
Engines Power (each)	5,000 hp
Emergency Power	Caterpillar, LSA 50.1 M6-4P, 782 kW, 1,800 rpm
Power Distribution	IPT

STORAGE CAPACITIES

Fuel Oil	2435.05 m ³
Liquid Mud (active)	678 m ³
Liquid Mud (reserve)	400 m ³
Base Oil Mud	-
Brine	850 m ³
Drill Water	1434 m ³
Potable Water	1439.46 m ³
Bulk Material	Cement: 226 m ³ / Barite: 170 m ³ / Bentonite: 170 m ³ total: 566 m ³
Sack Storage	2.85 MT/m

BOP AND WELL CONTROL EQUIPMENT

Bop Configuration	8-A2-R5
Bop Size	18 3/4 in
Bop Rams Working Pressure	15,000 psi
Bop Annular Working Pressure	10,000 psi
Bop Handling	TSC Patriot 400-ton BOP Transporter TSC Patriot 250-ton BOP Overhead Crane
Marine Riser Type	AKER CLIP Riser 75 ft
Marine Riser Id	19 ³ / ₈ in
Marine Riser Joints	107
Diverter	GE Hydril
Tree Handling	TSC Patriot 200-ton Tree Trolley; TSC Patriot 150-ton Tree Skid
Choke Manifold Working Pressure	15,000 psi
Choke Manifold Size	3.0625 in



STATION KEEPING / PROPULSION

Thrusters	8
Thrusters Type	Flowserve Azimuth
Thrusters Power	3,000 kW
Dp System	Kongsberg K-POS-32 Dynamic Positioning System
Mooring System	Emergency Mooring System with 2 (Two) BRÖHL double mooring winches

CRANES

Port	One (1) kingpost crane Seatrax S9032SS 60 ton @ 29m
Starboard	One (1) kingpost crane Seatrax S9032SS 60 ton @ 29m
Auxiliary Crane	Knuckle Boom with 3.5-ton Pipehandler gripper yoke

OTHER INFORMATION & FEATURES

MPD	MPD non-equipped
-----	------------------